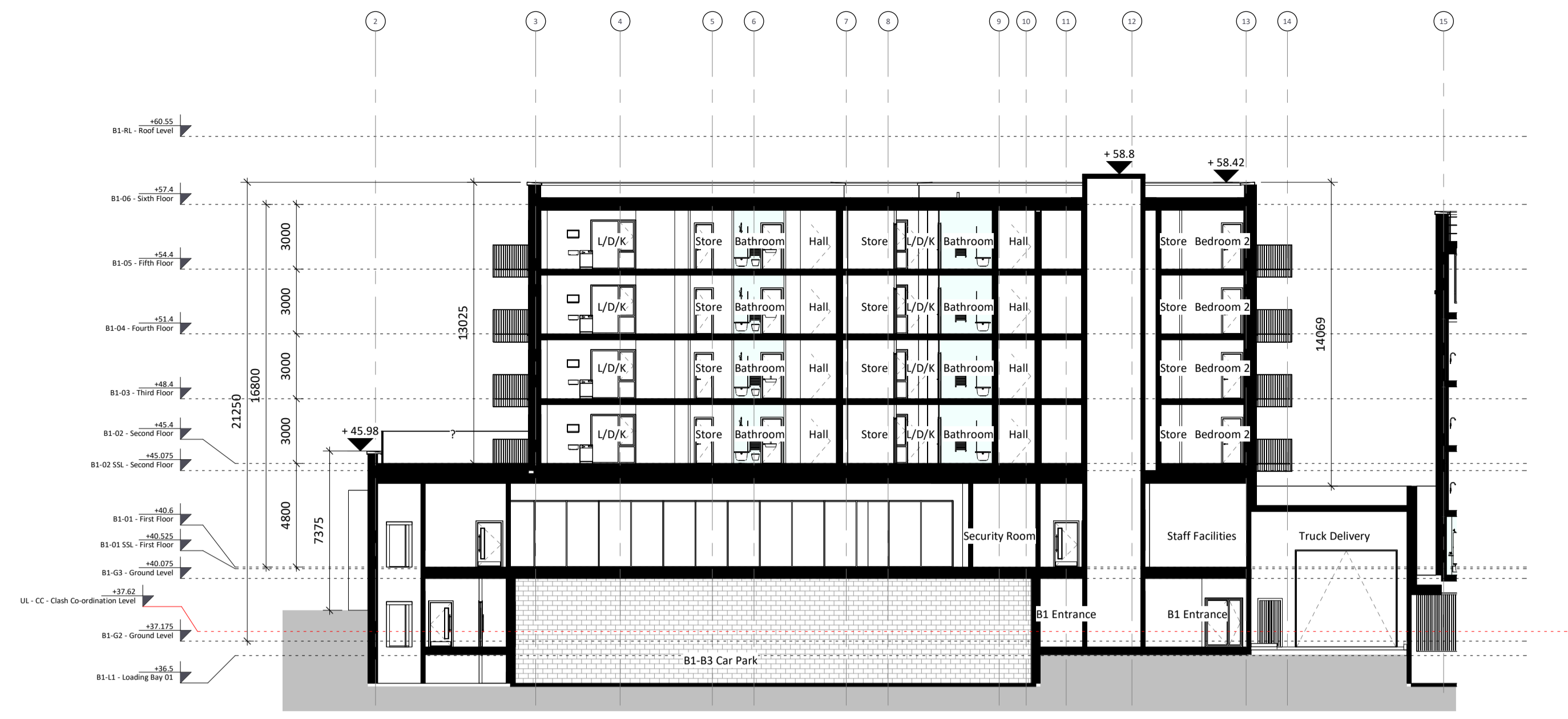
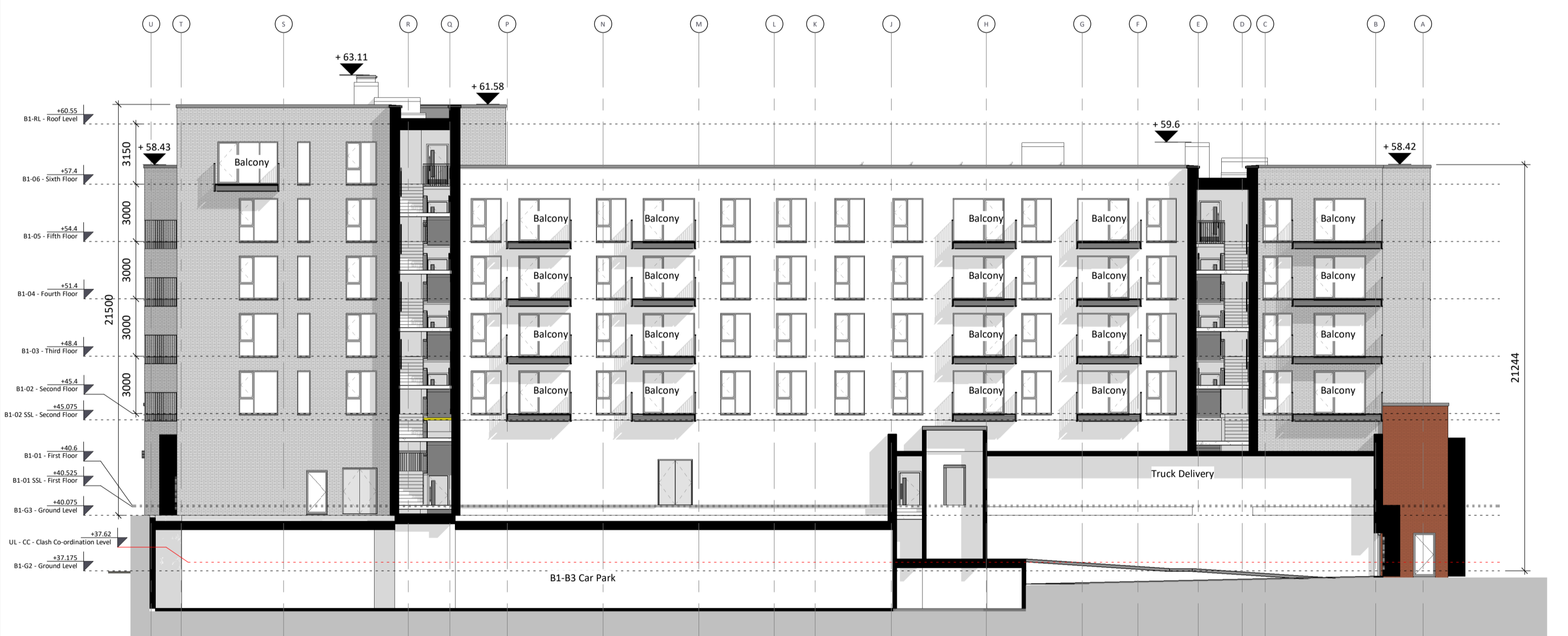


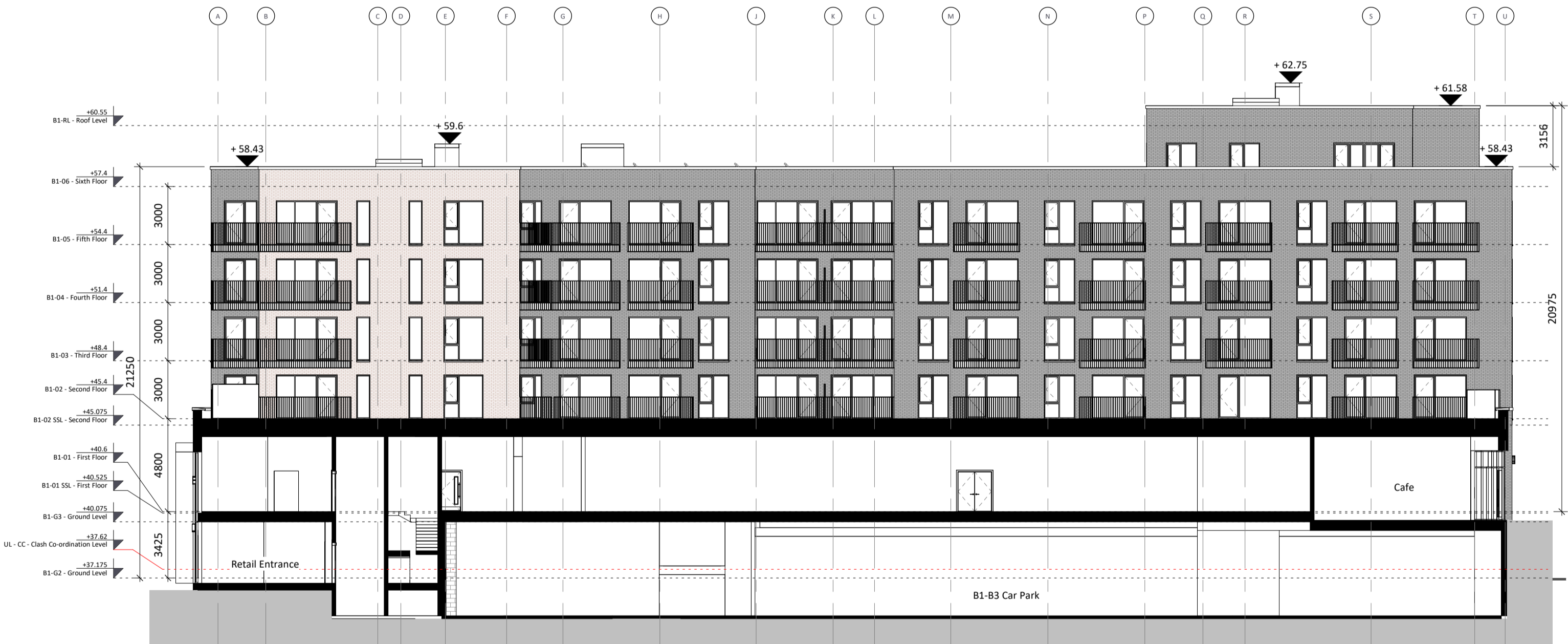
1 Pro\_B1-GA\_Section 1  
1:200



2 Pro\_B1-GA\_Section 2  
1:200

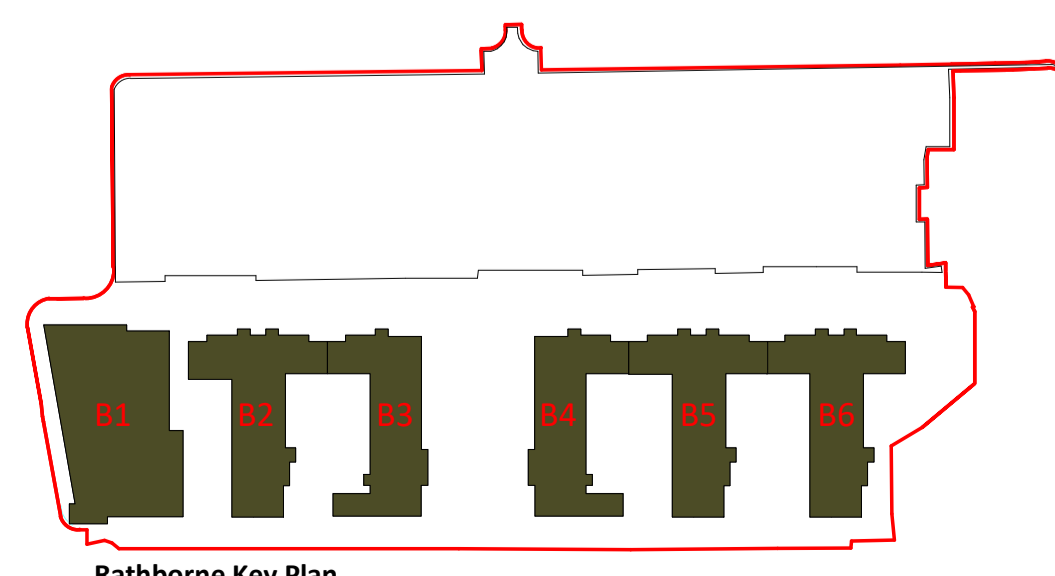
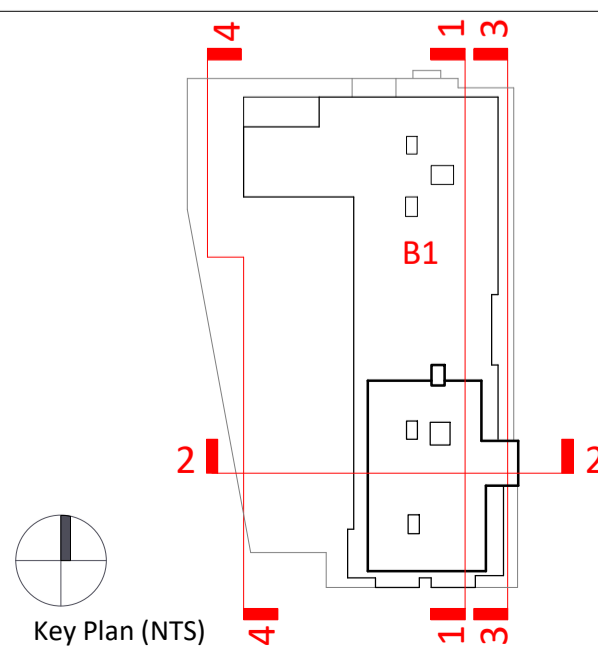


3 Pro\_B1-GA\_Section 3  
1:200



4 Pro\_B1-GA\_Section 4  
1:200

Block 01 - Sections - Permitted



Revision Description	Date	Rev. No.	Issued by
Issued for Coordination	23/11/21	P01	EMN
For Planning - Amended	31/05/23	C01	AT
Rathborne LRD Amendments	09/08/23	C02	AT
For Information - Rathborne B1 Amendments	22/04/24	P02	AT
For Information - Rathborne B1 Amendments	24/04/24	P03	AT
Rathborne B1 Amendments	17/05/24	C03	AT

**omahony pike**

Project Code: 19016A Scale @ A1: 1:200  
 Project Lead: EM Date: 17/05/24  
 Drawn By: CM Revision: C03  
 Job No.: 19016A Status: A3  
 Purpose: Planning

architecture | urban design  
 email: info@omahonypike.com  
 tel: +353 1 202 7400  
 fax: +353 1 283 0822  
 www.omahonypike.com

Dublin Cork  
 The Chapel One South Mall  
 Mount St. Anne's Cork City  
 Milltown, Dublin 6 Co. Cork  
 D06 XNS2 Ireland T12 CCN3 Ireland

Project: Rathborne 725 Block A Substation LRD Amendment  
 Location: Rathborne, Dublin 15  
 Client: Ruirsde Developments Limited

Drawing Title: Block 01 - Sections - Permitted  
 Drawing No.: 19016A-OMP-B1-ZZ-DR-A-3001

Source File: 19016A-OMP-ZZ-22-M3-A-0001.rvt

Any reference to fire safety design or performance is presented for coordination purposes only. Refer only to the granted Fire Safety Certificate, and fire consultant's information for fire safety design, specification and performance.  
 Figured dimensions only to be used. This drawing is copyright of O'Mahony Pike Architects Ltd. All information is shared as per approved use in accordance with ISO19650-2:2018, Table 5; Standard Codes for Suitability of Models and Documents and the BEP. If the 'Status' field is empty, this information has been shared at 50 - WIP.