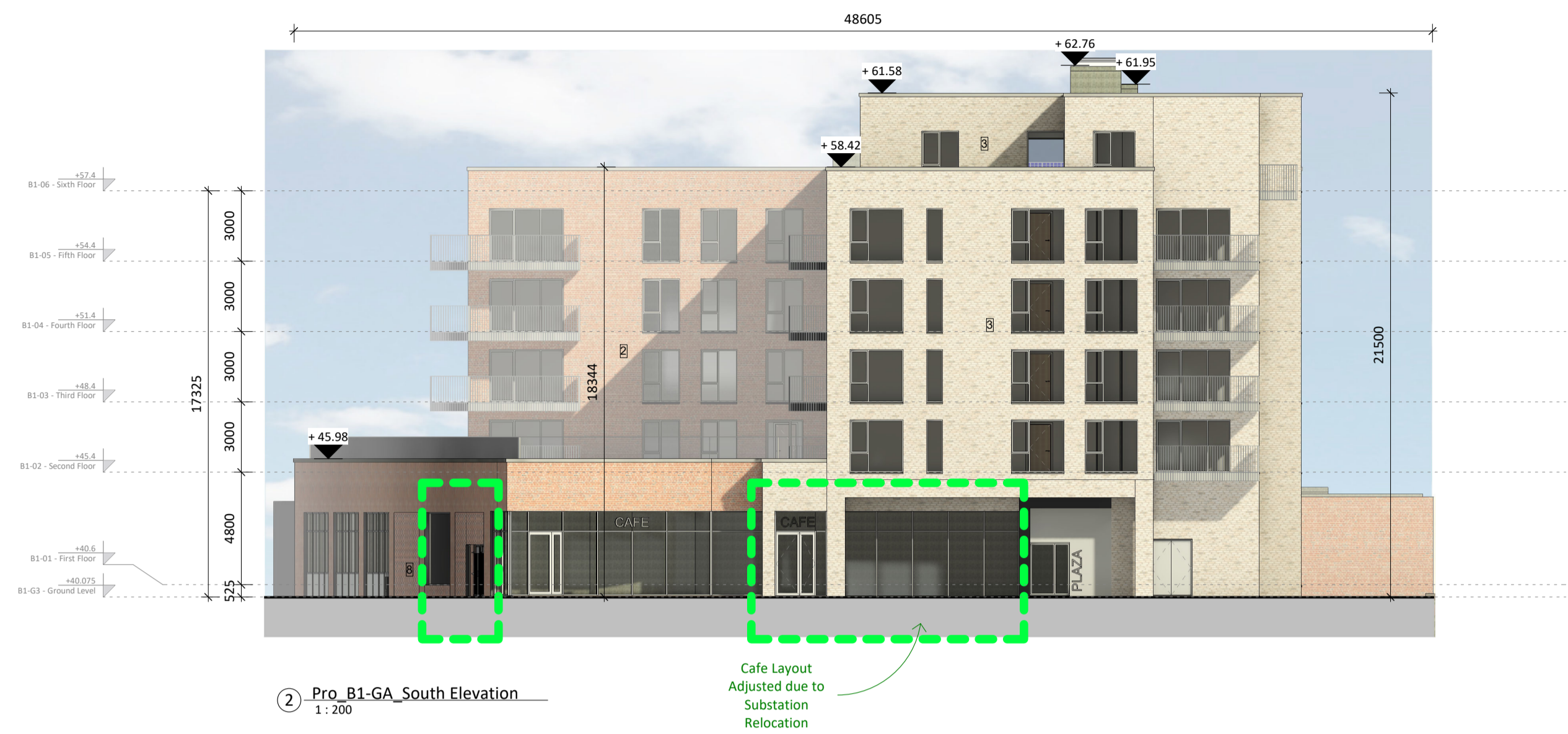
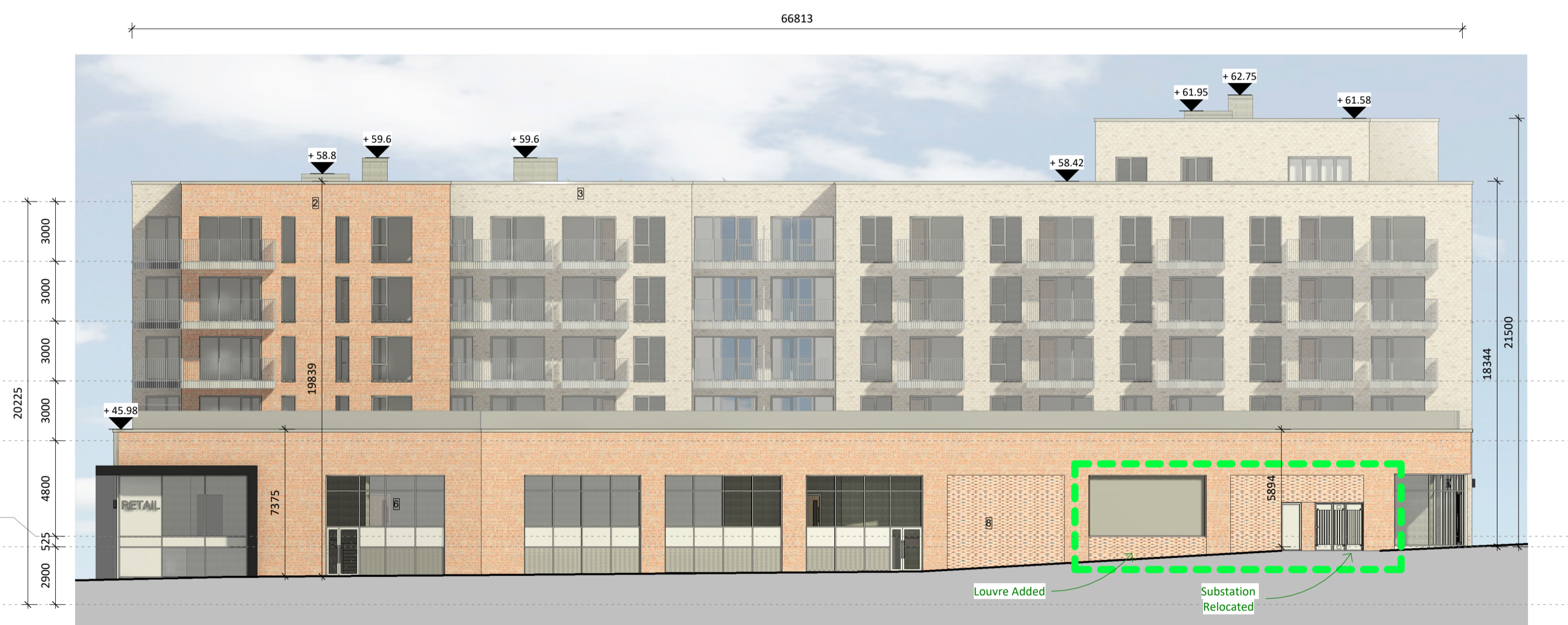


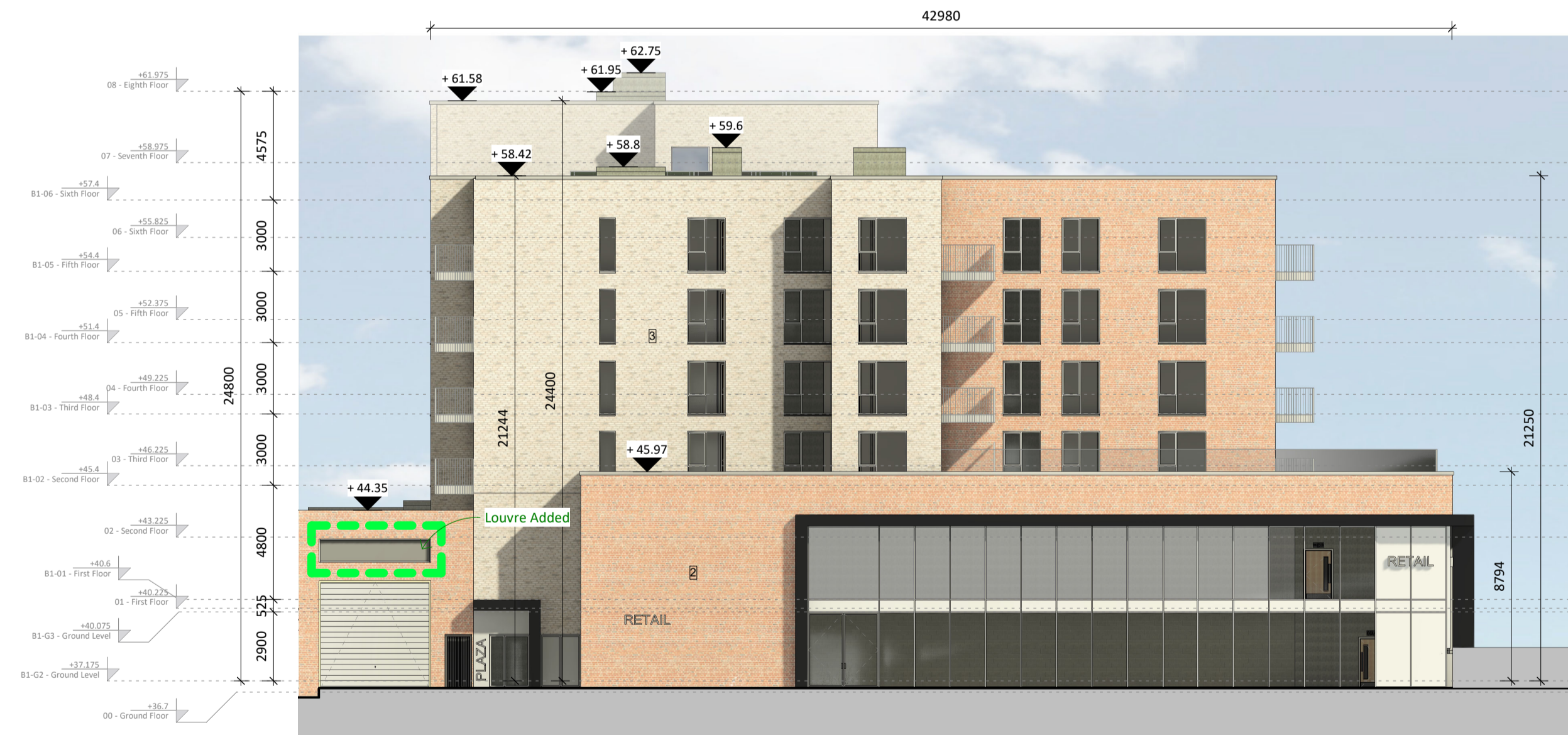
1 Pro_B1-GA_East Elevation
1:200



2 Pro_B1-GA_South Elevation
1:200



3 Pro_B1-GA_West Elevation
1:200

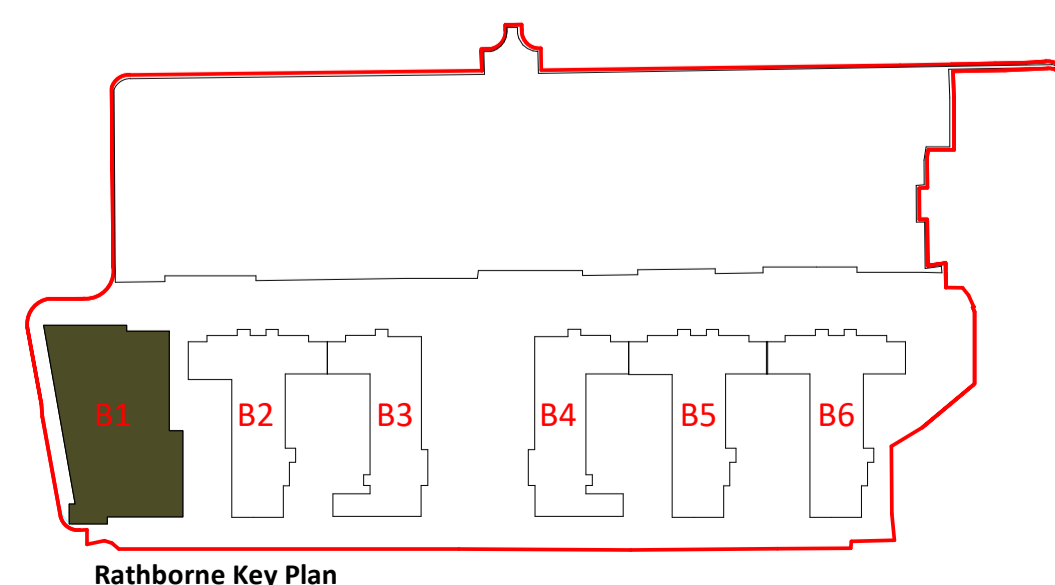
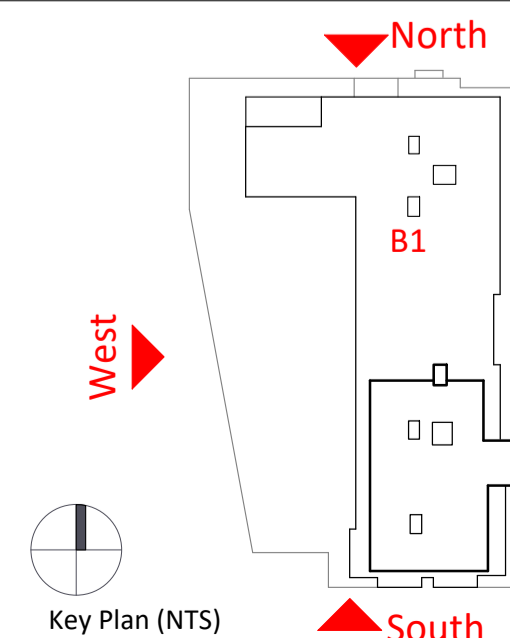


4 Pro_B1-GA_North Elevation
1:200

Block 01 - Elevations - Proposed

Extent of Proposed Amendments Outlined with a Green Dashed Line

- 1. Zinc finish
- 2. Selected red brick
- 3. Selected buff brick
- 4. Selected light grey brick
- 5. Light render finish
- 6. Glass curtain wall
- 7. Grey metal finish
- 8. Patterned brickwork



Revision Description	Date	Rev. No.	Issued by
Issued for Coordination	23/11/21	P01	EMN
For Planning - Amended	31/05/23	C01	AT
Rathborne LRD Amendments	09/08/23	C02	AT
For Information - Rathborne B1 Amendments	22/04/24	P02	AT
For Information - Rathborne B1 Amendments	24/04/24	P03	AT
Rathborne B1 Amendments	17/05/24	C03	AT



architecture | urban design
 email: info@mahonypike.com
 tel: +353 1 202 7400
 fax: +353 1 283 0822
 www.mahonypike.com

Dublin
 The Chapel
 Mount St. Anne's
 Milltown, Dublin 6
 D06 XN52 Ireland

Cork
 One South Mall
 Cork City
 Co. Cork
 T12 CCN3 Ireland

Project Code: 19016A
 Project Lead: EM
 Drawn By: CM
 Job No.: 19016A
 Purpose: Planning

Scale @ A1: As indicated
 Date: 17/05/24
 Revision: C03
 Status: A3

Project: Rathborne 725 Block A Substation LRD Amendment
 Location: Rathborne, Dublin 15
 Client: Ruiside Developments Limited

Drawing Title: Block 01 - Elevations - Proposed
 Drawing No.: 19016A-OMP-B1-ZZ-DR-A-2101

Any reference to fire safety design or performance is presented for coordination purposes only. Refer only to the granted Fire Safety Certificate, and fire consultant's information for fire safety design, specification and performance.
 Figured dimensions only to be used. This drawing is copyright of O'Mahony Pike Architects Ltd. All information is shared as per approved use in accordance with ISO19650-2:2018, Table 5; Standard Codes for Suitability of Models and Documents and the BEP. If the 'Status' field is empty, this information has been shared at 50 - WIP.